

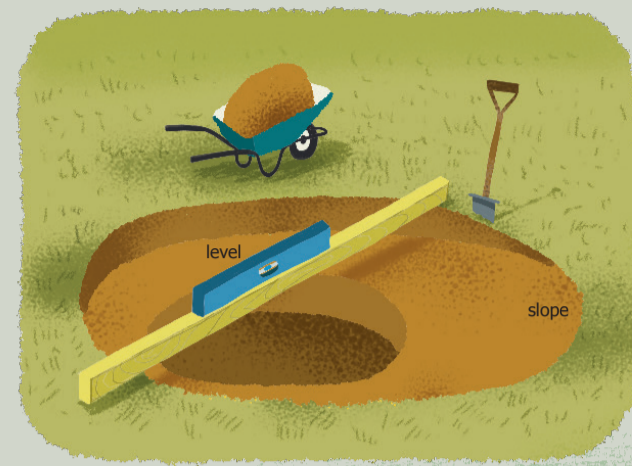


HOW TO CREATE & MANAGE A POND FOR WILDLIFE!

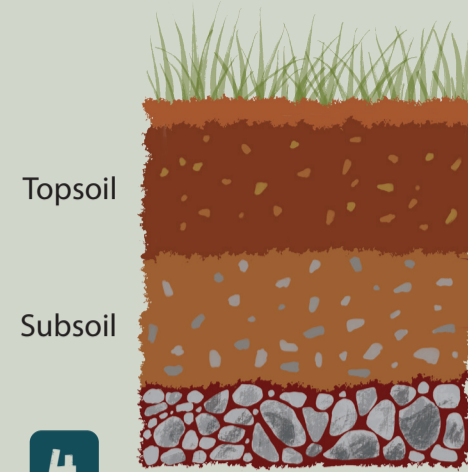
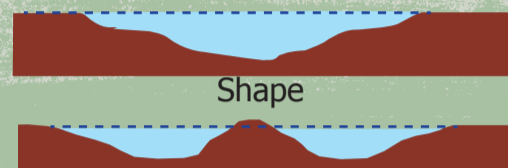


1 Find an area in your garden, school, or green space to locate your pond. Ideally, this area will get plenty of sunlight and not be over shaded by trees or walls.

2 1. Digging a trial pit is a great way to see how your site will retain water. It is always advised to dig approximately 40cm lower than the planned depth of your pond.
2. It's always wise to find out if there are pipes or cables underneath where you plan to dig. You can find this out from your utilities providers.



3 Design your pond. An ideal wildlife pond will be dish shaped, with shallow margins and a smaller deeper area. Most of the pond should be between 10cm-30cm deep, with the deepest part between 50-80cm.



4 Get digging! Remember that it is important to remove the topsoil. You will know the topsoil has been removed when you see the soil changing colour.

5 To protect your liner, place pond fleece or another type of underlay in your excavated area before installing the liner on top. This will stop tree roots and any sharp rocks from puncturing your liner. If you're planning to place heavy ornamental rocks into your pond, consider using more pond fleece on top of your pond liner to make a "pond liner sandwich". This will protect your liner from being punctured from above.



6 Choose an area of your pond and either excavate a very shallow shelf or fill it with stone to make it very shallow. This will make a lovely area for birds to wash and provide a safe ramp for small mammals like hedgehogs to get in and out of the pond.

7 Fill you pond with water, ideally use rain or well water.

8 Create some wildlife friendly areas around the edges of your pond, this can include longer grass, log and stone piles, and some branches that birds and dragonflies will use to perch on.

9 Don't be worried about your pond looking a little sparse at the start! Sit back and watch as wildlife and native plants make their way to the pond naturally.

10 Congratulations, enjoy your new pond as it matures and diversifies!

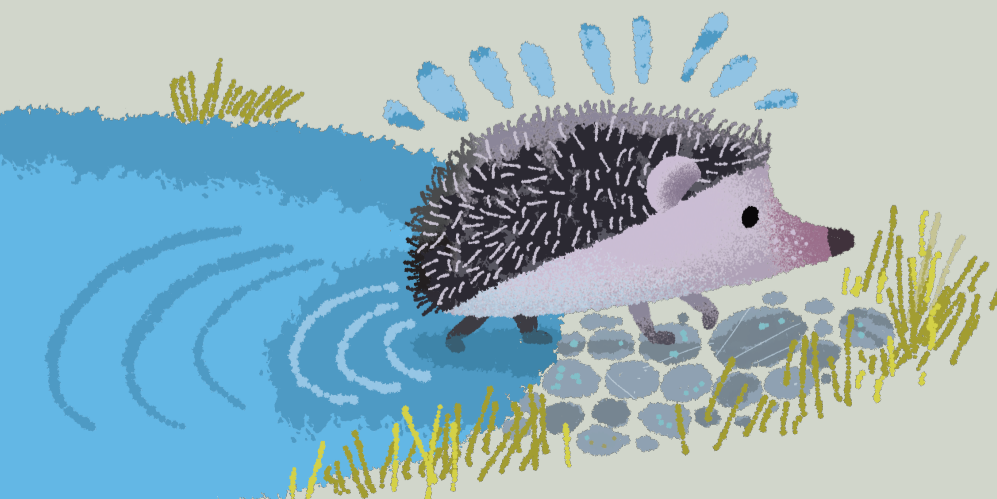


Illustration: Brian Fitzgerald